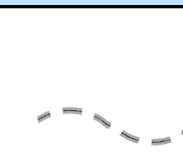

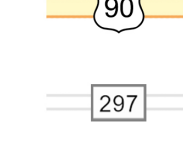




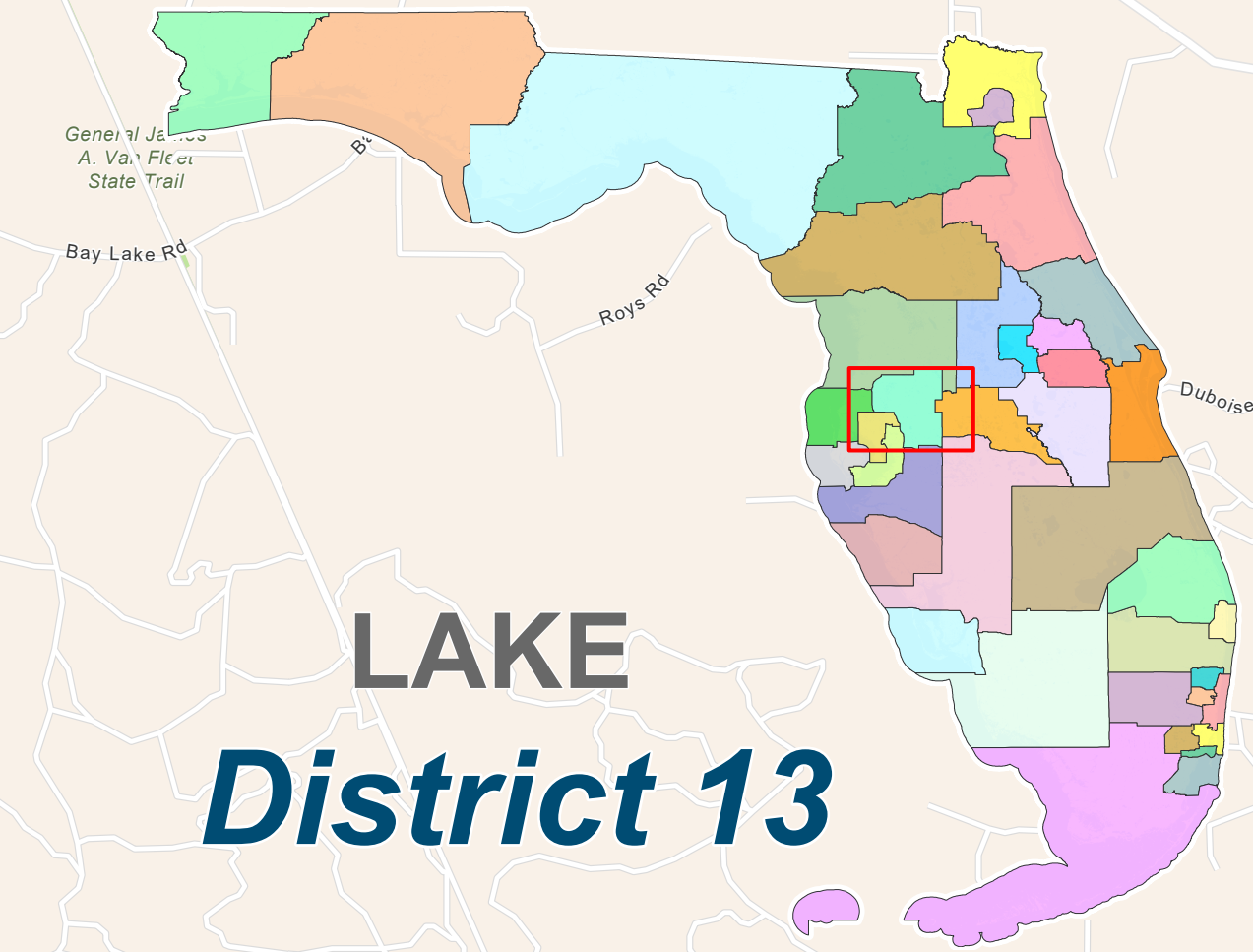
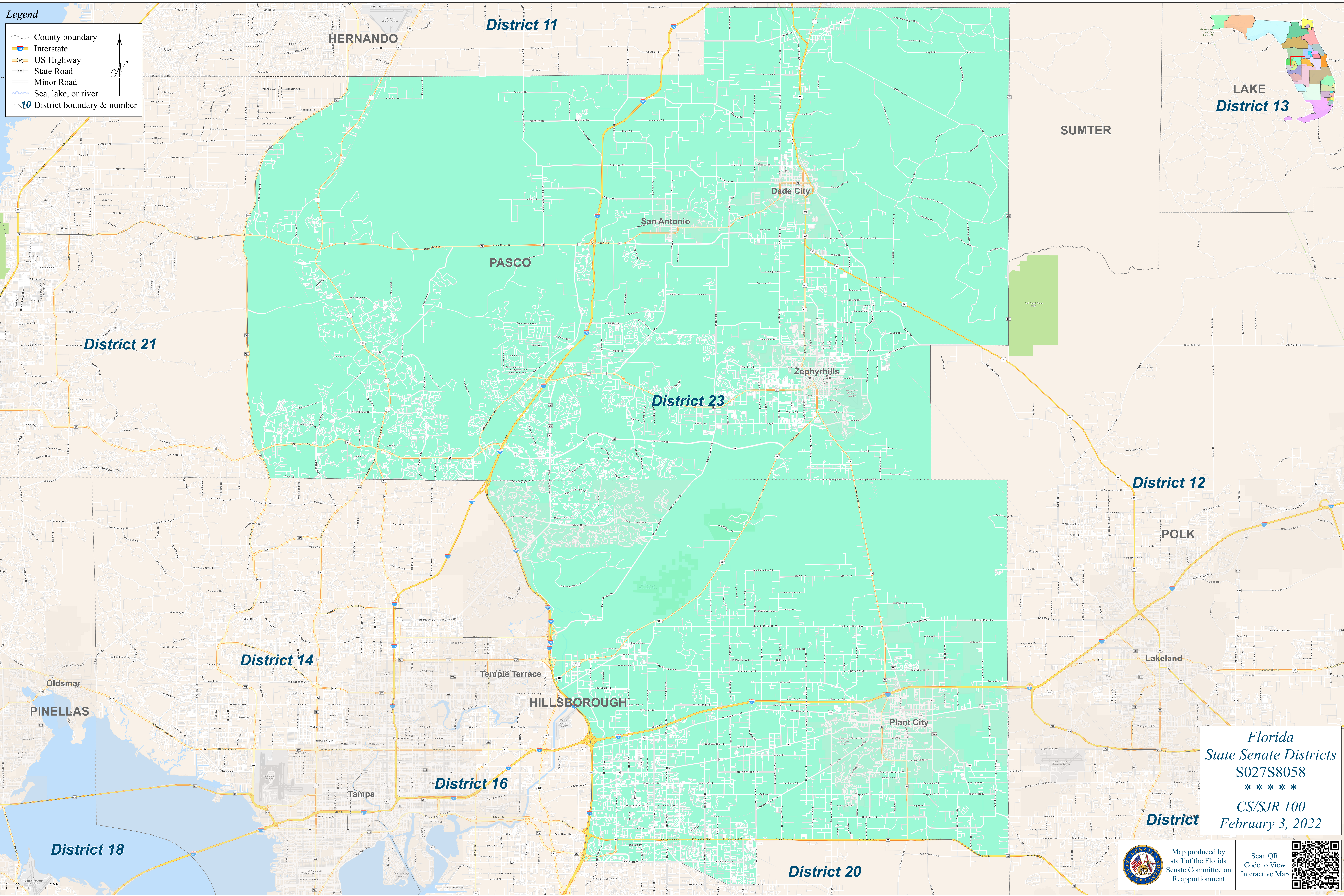


Legend

-  County boundary
-  Interstate
-  US Highway
-  State Road
-  Minor Road
-  Sea, lake, or river
-  10 District boundary & number



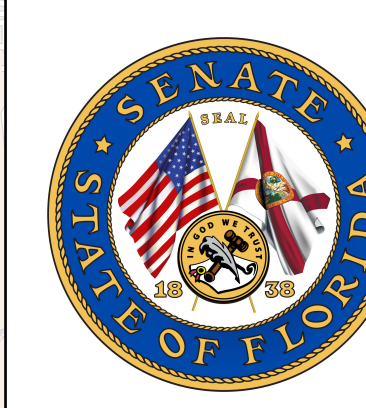
**LAKE
District 13**



*Florida
State Senate Districts
S027S8058

CS/SJR 100
February 3, 2022*

District



Map produced by
staff of the Florida
Senate Committee on
Reapportionment

Scan QR
Code to View
Interactive Map



0 0.5 1 Miles